

Heavy

VESUVIO WINTER S3S

VESUVWNT

Winter Leather Work Boots With S3S Protection

VESUVIO Winter S3S leather safety shoes with lightweight antipuncture midsole, insulated upper, Thinsulate 200 lining and rubber outsole for maximum grip.

Upper	Crazy Horse Leather
Lining	3M Thinsulate
Footbed	SJ foam winter footbed
Midsole	Anti-puncture Textile
Outsole	BASF PU/Rubber (NBR)
Toecap	Steel
Category	S3S / SR, SC, HI, CI, FO, HRO
Size range	EU 36-50
Sample weight	0.820 kg
Norms	ASTM F2413:2018 EN ISO 20345:2022



BLK



Breathable leather upper

Natural leather provides a high degree of wearer comfort combined with durability in versatile applications.



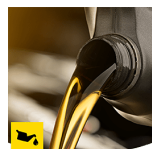
Cold insulated (CI)

Cold insulated (CI) safety shoes keep your feet warm. They are worn in cold environments.



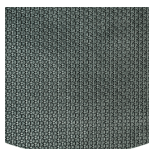
Heat resistant outsole (HRO)

The outsole resists high temperatures up to 300°C.



Oil & fuel resistant

The outsole is resistant against oil and fuel.



Rubber outsole

Rubber outsoles provide versatile functions that make them suitable for many areas of application: excellent cut resistance, heat and cold resistance, high flexibility at cold temperatures, resistance against oil, fuel and many chemicals.



Scuff Cap (SC)

Separately tested material to cover the toe cap area to reduce abrasion of the upper material (e.g. during kneeling operations) and extend usability of the safety shoe.

Industries:

Construction, Industry, Logistics, Oil & Gas, Mining

Environments:

Cold environment, Extreme slippery surfaces, Muddy environment, Uneven surfaces, Wet environment, Warm surfaces

Maintenance instructions:

To extend the life of your shoes, we recommend to clean them regularly and to protect them with adequate products. Do not dry your shoes on a radiator, nor nearby a heat source.

	Description	Measure unit	Result	EN ISO 20345
Upper	Crazy Horse Leather			
	Upper: permeability to water vapor	mg/cm²/h	3.2	# 0.8
	Upper: water vapor coefficient	mg/cm²	33.3	# 15
Lining	3M Thinsulate			
	Lining: permeability to water vapor	mg/cm²/h	103.5	# 2
	Lining: water vapor coefficient	mg/cm²	827.6	# 20
Footbed	SJ foam winter footbed			
	Footbed: abrasion resistance (dry/wet) (cycles)	cycles	Dry 25600 cycles/Wet 12800 cycles	25600/12800
Outsole	BASF PU/Rubber (NBR)			
	Outsole abrasion resistance (volume loss)	mm³	83.9	# 150
	Basic Slip resistance - Ceramic + NaLS - Forward heel slip	friction	0.54	# 0.31
	Basic Slip resistance - Ceramic + NaLS - Backward forepart slip	friction	0.48	# 0.36
	SR Slip resistance - Ceramic + glycerin - Forward heel slip	friction	0.32	# 0.19
	SR Slip resistance - Ceramic + glycerin - Backward forepart slip	friction	0.30	# 0.22
	Antistatic value	MegaOhm	390	0.1 - 1000
	ESD value	MegaOhm	N/A	0.1 - 100
	Heel energy absorption	J	37	# 20
Toecap	Steel			
	Impact resistance toecap (clearance after impact 100J)	mm	N/A	N/A
	Compression resistance toecap (clearance after compression 10kN)	mm	N/A	N/A
	Impact resistance toecap (clearance after impact 200J)	mm	15.0	# 14
	Compression resistance toecap (clearance after compression 15kN)	mm	20.0	# 14

Sample size:

Our shoes are constantly evolving, the technical data above may change. All product names and brand Safety Jogger, are registered and may not be used or reproduced in any format, without written consent from us.



HEAD-TO-TOE
PROTECTION



Proudly ranked in the
top 1% by EcoVadis
for sustainability.



www.safetyjogger.com