

SAFETY JOGGER

PROFESSIONAL



CLOGS

SMOOTH OB

Closed model with great comfort

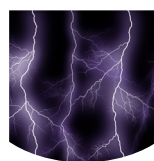


Upper	Expanded EVA
Outsole	EVA, EVA/Rubber
Toecap	
Midsole	
Lining	N/A
Footbed	N/A
Safety category	EN ISO 20347 - OB / ESD, A, SRC, E
Sample weight	0.220 gr.
Size range	EU 36-46 / UK 3.5-11.0 / US 4.0-12.0 / CM 23.5-30.0



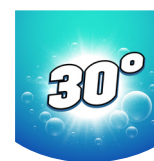
WATERPROOF MATERIALS

Waterproof materials make you capable of escorting patients into the shower in a safe and hygienic way.



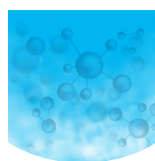
ELECTROSTATIC DISCHARGE (ESD)

ESD provides the controlled discharge of electrostatic energy that can damage electronic components and avoids risks of ignition resulting from electrostatic charges. Volume resistance between 100 KiloOhm and 35 MegaOhm.



WASHABLE 30°C

These shoes can be washed in a washing machine at 30°C.



CHEMICALLY & UV STERILIZEABLE

This shoe is chemically and UV sterilizeable.

SAFETY JOGGER
WORKS

INDUSTRIAL PROFESSIONAL TACTICAL

WWW.SAFETYJOGGER.COM

ENGINEERED
IN EUROPE



CLOGS

SMOOTH OB

Industries:

Catering, Cleaning, Food & beverages

Environments:

Dry environment, Extreme slippery surfaces, Wet environment

Maintenance instructions:

To extend the life of your shoes, we recommend to clean them regularly and to protect them with adequate products. Do not dry your shoes on a radiator, nor nearby a heat source.

	Description	Measure unit	Result	EN ISO 20347
Upper	Expanded EVA			
	Upper: permeability to water vapor	mg/cm ² /h	N/A	≥ 0.8
	Upper: water vapor coefficient	mg/cm ²	N/A	≥ 15
Lining	N/A			
	Lining: permeability to water vapor	mg/cm ² /h	N/A	≥ 2
	Lining: water vapor coefficient	mg/cm ²	N/A	≥ 20
Footbed	N/A			
	Footbed: abrasion resistance	cycles	N/A	≥ 400
Outsole	EVA, EVA/Rubber			
	Outsole abrasion resistance (volume loss)	mm ³	145	≤ 150
	Outsole slip resistance SRA: heel	friction	0.44	≥ 0.28
	Outsole slip resistance SRA: flat	friction	0.51	≥ 0.32
	Outsole slip resistance SRB: heel	friction	0.16	≥ 0.13
	Outsole slip resistance SRB: flat	friction	0.22	≥ 0.18
	Antistatic value	MegaOhm	158	0.1 - 1000
	ESD value	MegaOhm	1.3	0.1 - 100
	Heel energy absorption	J	39	≥ 20
Toecap				
	Impact resistance toecap (clearance after impact 100J)	mm	N/A	≥ 13
	Compression resistance toecap (clearance after compression 10kN)	mm	N/A	≥ 13
	Impact resistance toecap (clearance after impact 200J)	mm	N/A	≥ 13
	Compression resistance toecap (clearance after compression 15kN)	mm	N/A	≥ 13

Our shoes are constantly evolving, the technical data above may change. All product names and brand Safety Jogger, are registered and may not be used or reproduced in any format, without written consent from us.

Sample size:
38