



Light

## SHEILA OB

### Comfortable Medical Shoes With Velcro Strap

SHEILA shoes offer ESD protection, vegan design, breathable comfort, great traction, and posture support for medical, food, and cleaning work.

Upper	Lorica
Lining	Mesh
Footbed	SJ foam footbed
Outsole	Phylon/Rubber (NBR)
Category	OB / ESD, A, SRC, E
Size range	EU 35-42 / UK 3.0-8.0 / US 5.5-10.5 JPN 21.5-26.5 / KOR 230-270
Sample weight	0.270 kg
Norms	ASTM F2892:2018 EN ISO 20347:2012



FUC



LBL

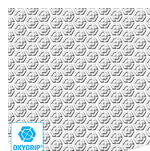


WHT



#### Electrostatic Discharge (ESD)

ESD provides the controlled discharge of electrostatic energy that can damage electronic components and avoids risks of ignition resulting from electrostatic charges. Volume resistance between 100 KiloOhm and 100 MegaOhm.



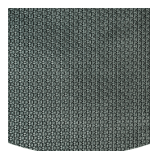
#### Oxygrip / SJ Grip

Rubber outsoles with Oxytraction® technology provide excellent traction on both dry and wet floors and meet SRC (SRA+ SRB) standards.



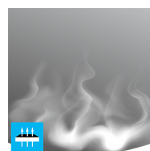
#### Removable insole

Renew your insole at a regular base or use your own orthopedic insoles for a higher comfort.



#### Rubber outsole

Rubber outsoles provide versatile functions that make them suitable for many areas of application: excellent cut resistance, heat and cold resistance, high flexibility at cold temperatures, resistance against oil, fuel and many chemicals.



#### Breathable upper

Increased moisture and temperature management for extended wearer comfort.

**Industries:**  
Catering, Cleaning, Food & beverages, Medical

**Environments:**  
Dry environment, Extreme slippery surfaces

**Maintenance instructions:**  
To extend the life of your shoes, we recommend to clean them regularly and to protect them with adequate products. Do not dry your shoes on a radiator, nor nearby a heat source.

	Description	Measure unit	Result	EN ISO 20347
Upper	Lorica			
	Upper: permeability to water vapor	mg/cm²/h	9.4	# 0.8
	Upper: water vapor coefficient	mg/cm²	78	# 15
Lining	Mesh			
	Lining: permeability to water vapor	mg/cm²/h	43.7	# 2
	Lining: water vapor coefficient	mg/cm²	350	# 20
Footbed	SJ foam footbed			
	Footbed: abrasion resistance (dry/wet) (cycles)	cycles	25600/12800	25600/12800
Outsole	Phylon/Rubber (NBR)			
	Outsole abrasion resistance (volume loss)	mm³	134.2	# 150
	Outsole slip resistance SRA: heel	friction	0.49	# 0.28
	Outsole slip resistance SRA: flat	friction	0.43	# 0.32
	Outsole slip resistance SRB: heel	friction	0.29	# 0.13
	Outsole slip resistance SRB: flat	friction	0.33	# 0.18
	Antistatic value	MegaOhm	N/A	0.1 - 1000
	ESD value	MegaOhm	17.1	0.1 - 100
	Heel energy absorption	J	37.3	# 20

Sample size:

Our shoes are constantly evolving, the technical data above may change. All product names and brand Safety Jogger, are registered and may not be used or reproduced in any format, without written consent from us.



HEAD-TO-TOE  
PROTECTION



Proudly ranked in the  
top 1% by EcoVadis  
for sustainability.



www.safetyjogger.com