

SAFETY JOGGER

PROFESSIONAL

CLOGS

SAFETYCLOG SB

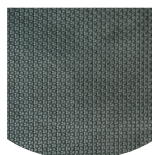
Easy fitting lightweight safety shoe

Upper	Expanded EVA
Outsole	Rubber
Toecap	Composite
Midsole	N/A
Lining	N/A
Footbed	SJ foam footbed
Safety category	EN ISO 20345 - SB / SRC, E
Sample weight	345 gr.
Size range	EU 36-45 / UK 3.5-10.5 / US 4.0-11.5 / CM 23.5-29.5



COMPOSITE TOECAP

Metalfree and lightweight, no thermal or electrical conductivity



RUBBER OUTSOLE

Rubber outsoles provide versatile functions that make them suitable for many areas of application: excellent cut resistance, heat and cold resistance, high flexibility at cold temperatures, resistance against oil, fuel and many chemicals.



REMOVABLE INSOLE

Renew your insole at a regular base or use your own orthopedic insoles for a higher comfort.



SRC SLIP RESISTANCE

Slip resistant soles are one of the most important features of safety and occupational footwear. SRC slip resistant soles pass both SRA and SRB slip resistant tests, they are tested on both steel and ceramic surfaces.

SAFETY JOGGER
WORKS

INDUSTRIAL PROFESSIONAL TACTICAL

WWW.SAFETYJOGGER.COM

ENGINEERED
IN EUROPE

SAFETYCLOG SB

Industries:

Catering, Cleaning, Food & beverages, Medical

Environments:

Dry environment, Wet environment

Maintenance instructions:

To extend the life of your shoes, we recommend to clean them regularly and to protect them with adequate products. Do not dry your shoes on a radiator, nor nearby a heat source.

	Description	Measure unit	Result	EN ISO 20345
Upper	Expanded EVA			
	Upper: permeability to water vapor	mg/cm ² /h	NA	≥ 0.8
	Upper: water vapor coefficient	mg/cm ²	NA	≥ 15
Lining	N/A			
	Lining: permeability to water vapor	mg/cm ² /h	NA	≥ 2
	Lining: water vapor coefficient	mg/cm ²	NA	≥ 20
Footbed	SJ foam footbed			
	Footbed: abrasion resistance	cycles	NA	≥ 400
Outsole	Rubber			
	Outsole abrasion resistance (volume loss)	mm ³	87	≤ 150
	Outsole slip resistance SRA: heel	friction	0.35	≥ 0.28
	Outsole slip resistance SRA: flat	friction	0.36	≥ 0.32
	Outsole slip resistance SRB: heel	friction	0.22	≥ 0.13
	Outsole slip resistance SRB: flat	friction	0.27	≥ 0.18
	Antistatic value	MegaOhm	NA	0.1 - 1000
	ESD value	MegaOhm	NA	0.1 - 100
	Heel energy absorption	J	25	≥ 20
Toecap	Composite			
	Impact resistance toecap (clearance after impact 100J)	mm	NA	≥ 14
	Compression resistance toecap (clearance after compression 10kN)	mm	NA	≥ 14
	Impact resistance toecap (clearance after impact 200J)	mm	16.0	≥ 14
	Compression resistance toecap (clearance after compression 15kN)	mm	17.5	≥ 14

Our shoes are constantly evolving, the technical data above may change.

All product names and brand Safety Jogger, are registered and may not be used or reproduced in any format, without written consent from us.

Sample size: 41