



SAFETY JOGGER

PROFESSIONAL



Light

JULINE OB

JULINE2

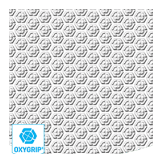
Stylish Work Pump

The stylish JULINE work pumps offer superior comfort, excellent grip, and body posture relief. Perfect for uniform and catering industries.

Upper	Synthetic Leather
Lining	Synthetic Leather
Footbed	SJ foam footbed
Outsole	Rubber (NBR)
Category	OB / SRC
Size range	EU 35-42 / UK 3.0-8.0 / US 5.5-10.5 JPN 21.5-26.5 / KOR 230-270
Sample weight	0.270 kg
Norms	EN ISO 20347:2012



BLK



Oxygrip / SJ Grip

Rubber outsoles with Oxytraction® technology provide excellent traction on both dry and wet floors and meet SRC (SRA+ SRB) standards.



SRA slip resistance

Slip resistance is one of the most important features of safety and occupational footwear. SRA slip resistant soles are tested on a ceramic tile with dilute soap solution.



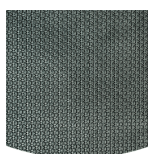
Breathable upper

Increased moisture and temperature management for extended wearer comfort.



SJ Foam

Removable comfortable antistatic footbed providing fit, guidance and optimum shock absorption in heel and forefoot. Breathable and moisture absorbing.



Rubber outsole

Rubber outsoles provide versatile functions that make them suitable for many areas of application: excellent cut resistance, heat and cold resistance, high flexibility at cold temperatures, resistance against oil, fuel and many chemicals.



Heel energy absorption

Heel energy absorption reduces the impact of jumps or running on the body of the wearer.

SAFETY JOGGER
WORKS

HEAD-TO-TOE
PROTECTION



Proudly ranked in the top 1% by EcoVadis for sustainability.

ENGINEERED
IN EUROPE

www.safetyjogger.com

Industries:

Catering, Uniform

Environments:

Dry environment, Extreme slippery surfaces

Maintenance instructions:

To extend the life of your shoes, we recommend to clean them regularly and to protect them with adequate products. Do not dry your shoes on a radiator, nor nearby a heat source.

	Description	Measure unit	Result	EN ISO 20347
Upper	Synthetic Leather			
	Upper: permeability to water vapor	mg/cm²/h	3.55	# 0.8
	Upper: water vapor coefficient	mg/cm²	31	# 15
Lining	Synthetic Leather			
	Lining: permeability to water vapor	mg/cm²/h	33.03	# 2
	Lining: water vapor coefficient	mg/cm²	264	# 20
Footbed	SJ foam footbed			
	Footbed: abrasion resistance (dry/wet) (cycles)	cycles	25600/12800	25600/12800
Outsole	Rubber (NBR)			
	Outsole abrasion resistance (volume loss)	mm³	93	# 150
	Outsole slip resistance SRA: heel	friction	0.34	# 0.28
	Outsole slip resistance SRA: flat	friction	0.34	# 0.32
	Outsole slip resistance SRB: heel	friction	0.16	# 0.13
	Outsole slip resistance SRB: flat	friction	0.18	# 0.18
	Antistatic value	MegaOhm	N/A	0.1 - 1000
	ESD value	MegaOhm	N/A	0.1 - 100
	Heel energy absorption	J	N/A	# 20

Sample size:

Our shoes are constantly evolving, the technical data above may change. All product names and brand Safety Jogger, are registered and may not be used or reproduced in any format, without written consent from us.



HEAD-TO-TOE
PROTECTION



Proudly ranked in the
top 1% by EcoVadis
for sustainability.



www.safetyjogger.com