

SAFETY JOGGER

PROFESSIONAL

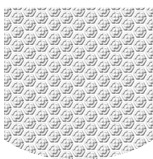


MOVE

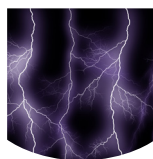
DANY OB

Trendy clog with a playful touch

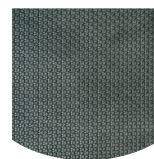
Upper	Synthetic Leather
Outsole	EVA/Rubber
Toecap	
Midsole	
Lining	Mesh
Footbed	SJ foam footbed
Safety category	EN ISO 20347 - OB / ESD, A, SRC, E
Sample weight	0.247 gr.
Size range	EU 35-42 / UK 3.0-8.0 / US 5.5-10.5 / CM 23.0-27.0



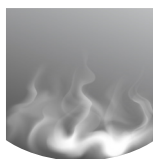
OXYGRIP / SJ GRIP
Rubber outsoles with Oxytraction® technology provide excellent traction on both dry and wet floors and meet SRC (SRA+ SRB) standards.



ELECTROSTATIC DISCHARGE (ESD)
ESD provides the controlled discharge of electrostatic energy that can damage electronic components and avoids risks of ignition resulting from electrostatic charges. Volume resistance between 100 KiloOhm and 35 MegaOhm.



RUBBER OUTSOLE
Rubber outsoles provide versatile functions that make them suitable for many areas of application: excellent cut resistance, heat and cold resistance, high flexibility at cold temperatures, resistance against oil, fuel and many chemicals.



BREATHABLE UPPER
Increased moisture and temperature management for extended wearer comfort.



REMOVABLE INSOLE
Renew your insole at a regular base or use your own orthopedic insoles for a higher comfort.



MOVE

DANY OB

Industries:

Catering, Cleaning, Medical

Environments:

Dry environment, Extreme slippery surfaces

Maintenance instructions:

To extend the life of your shoes, we recommend to clean them regularly and to protect them with adequate products. Do not dry your shoes on a radiator, nor nearby a heat source.

	Description	Measure unit	Result	EN ISO 20347
Upper	Synthetic Leather			
	Upper: permeability to water vapor	mg/cm ² /h	3.3	≥ 0.8
	Upper: water vapor coefficient	mg/cm ²	28	≥ 15
Lining	Mesh			
	Lining: permeability to water vapor	mg/cm ² /h	43.7	≥ 2
	Lining: water vapor coefficient	mg/cm ²	350	≥ 20
Footbed	SJ foam footbed			
	Footbed: abrasion resistance	cycles	400	≥ 400
Outsole	EVA/Rubber			
	Outsole abrasion resistance (volume loss)	mm ³	129	≤ 150
	Outsole slip resistance SRA: heel	friction	0.38	≥ 0.28
	Outsole slip resistance SRA: flat	friction	0.36	≥ 0.32
	Outsole slip resistance SRB: heel	friction	0.17	≥ 0.13
	Outsole slip resistance SRB: flat	friction	0.24	≥ 0.18
	Antistatic value	MegaOhm	NA	0.1 - 1000
	ESD value	MegaOhm	80	0.1 - 100
	Heel energy absorption	J	26	≥ 20
Toecap				
	Impact resistance toecap (clearance after impact 100J)	mm	NA	≥ 13
	Compression resistance toecap (clearance after compression 10kN)	mm	NA	≥ 13
	Impact resistance toecap (clearance after impact 200J)	mm	NA	≥ 13
	Compression resistance toecap (clearance after compression 15kN)	mm	NA	≥ 13

Our shoes are constantly evolving, the technical data above may change. All product names and brand Safety Jogger, are registered and may not be used or reproduced in any format, without written consent from us.

Sample size:
38