



Medium

ALASKA C PRO S3

ALASKACPRO

Robust leather safety boot for challenging environments

The Safety Jogger ALASKA C PRO is a robust safety boot designed for tough industries. It offers superior protection, excellent grip, and personalized comfort. Ideal for various challenging environments.

Upper	Pull-up Action Leather
Lining	Cambrella
Footbed	SJ foam footbed
Midsole	Steel
Outsole	Rubber
Toecap	Steel
Category	S3 / SR, FO, HRO
Size range	EU 35-48 / UK 3.0-13.0 / US 3.0-13.5 JPN 21.5-31.5 / KOR 230-315
Sample weight	0.780 kg
Norms	ASTM F2413:2018 EN ISO 20345:2022



DBN



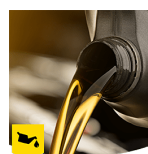
Antistatic

Antistatic footwear prevents build-up of static electrical charges and ensures that they are discharged effectively. Volume resistance between 100 KiloOhm and 1 GigaOhm



Heat resistant outsole (HRO)

The outsole resists high temperatures up to 300°C.



Oil & fuel resistant

The outsole is resistant against oil and fuel.



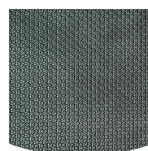
Removable insole

Renew your insole at a regular base or use your own orthopedic insoles for a higher comfort.



Slip resistance (SR)

Replaces the previously used term of SRA+SRB=SRC. SR means the slip test has been executed on tiles contaminated with soap and with oil.



Rubber outsole

Rubber outsoles provide versatile functions that make them suitable for many areas of application: excellent cut resistance, heat and cold resistance, high flexibility at cold temperatures, resistance against oil, fuel and many chemicals.

Industries:

Construction, Mining, Oil & Gas, Industry

Environments:

Cold environment, Dry environment, Muddy environment, Snowy and icy, Uneven surfaces, Wet environment

Maintenance instructions:

To extend the life of your shoes, we recommend to clean them regularly and to protect them with adequate products. Do not dry your shoes on a radiator, nor nearby a heat source.

	Description	Measure unit	Result	EN ISO 20345
Upper	Pull-up Action Leather			
	Upper: permeability to water vapor	mg/cm²/h	2.0	≥ 0.8
	Upper: water vapor coefficient	mg/cm²	17	≥ 15
Lining	Cambrella			
	Lining: permeability to water vapor	mg/cm²/h	28.68	≥ 2
	Lining: water vapor coefficient	mg/cm²	230	≥ 20
Footbed	SJ foam footbed			
	Footbed: abrasion resistance (dry/wet) (cycles)	cycles	Dry 25600 cycles/Wet 12800 cycles	25600/12800
Outsole	Rubber			
	Outsole abrasion resistance (volume loss)	mm³	Relative volume loss:123g/cm³(Density:1.14)	≤ 150
	Basic Slip resistance - Ceramic + NaLS - Forward heel slip	friction	0.42	≥ 0.31
	Basic Slip resistance - Ceramic + NaLS - Backward forepart slip	friction	0.45	≥ 0.36
	SR Slip resistance - Ceramic + glycerin - Forward heel slip	friction	0.33	≥ 0.19
	SR Slip resistance - Ceramic + glycerin - Backward forepart slip	friction	0.33	≥ 0.22
	Antistatic value	MegaOhm	20.9	0.1 - 1000
	ESD value	MegaOhm	N/A	0.1 - 100
	Heel energy absorption	J	53	≥ 20
Toecap	Steel			
	Impact resistance toecap (clearance after impact 100J)	mm	NA	N/A
	Compression resistance toecap (clearance after compression 10kN)	mm	NA	N/A
	Impact resistance toecap (clearance after impact 200J)	mm	19.0	≥ 14
	Compression resistance toecap (clearance after compression 15kN)	mm	22.5	≥ 14

Sample size: 42

Our shoes are constantly evolving, the technical data above may change. All product names and brand Safety Jogger, are registered and may not be used or reproduced in any format, without written consent from us.



Solutions for every workplace

INDUSTRIAL PROFESSIONAL TACTICAL TIGER GRIP



www.safetyjogger.com