



EU-TYPE EXAMINATION CERTIFICATE



The following model of Personal Protective Equipment has been subjected to an EU-type examination in accordance with the module B of the PPE regulation (2016/425) and in accordance with the current certification process. It has been shown to satisfy to essential health and safety requirements.

Certificate N° 0075/1562/161/11/25/2653

Issued by CTC, Notified Body N°0075, to the following model of personal protective equipment :

Manufacturer : CORTINA NV
MEERSBLOEM-MELDEN 42, 9700 OUDENAARDE
BELGIUM

Description

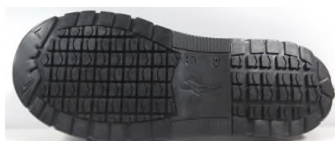
PPE Type : Overshoes against slipping risks, impact and compression risks of the toe, perforation

Product reference : VISITOR INTEGRAL

Article code :

Construction and material of outsole : Flat Injected Rubber

Pictures :



CE
VISITOR INTEGRAL

O/319819 SIZE M 03/2025



Meersbloom-Melden 42, B-9700
Oudenaarde

Made in China
Hecho en China
Fabriqué en Chine

Reference standard : CTC Expert statement according to the CTC CE C 002_c evaluation protocol

Classification : II

Size range : S(34-37) / M(38-42) / L(43-45) / XL(46-47)

Toecap nature : Metallic

Insert nature : Metallic

At the date of certificate the product is in compliance with Annex XVII of REACH regulation (n° 1907/2006 and revisions)

Full description of the PPE, reference rules verified in the context of the EU-type examination and information given on the product are detailed in the manufacturer's technical file index 01 dated from NOVEMBER 2025 and the user instructions index Version 2025-11-13.

NOTA : Any modification to new items of the personal protective equipment object of this EU type approval certificate or any modification of the information contained in the manufacturer technical file which served for the deliverance of the EU type approval certificate (change of address, change of company status) should be brought to the attention of the notified body in accordance with Annex V §7.2 of Regulation 2016/425. Any marking on the PPE which is not concerned by the Regulation (UE) 2016/425, is not covered by this certificate.

Issued in Lyon by

William GELAS
Certification manager

Date of first issue: 21 November 2025

Date of end of validity: 20 November 2030



In application of the Regulation 2016/425 of the European parliament and the Council of 9th March 2016 related to Personal Protective Equipment and repealing the Directive 89/686/EEC.



Accreditation n° 5-0594
Scope available on:
www.cofrac.fr

www.ctcgroupe.com

cemarking@ctcgroupe.com

CTC - 4, rue Hermann Frenkel - 69367 Lyon cedex 07 - France
Tél. : +33 (0)4 72 76 10 10 - Fax : +33 (0)4 72 76 10 00 - ctclyon@ctcgroupe.com

Comité Professionnel de Développement Économique (CPDE) Cuir Chaussure Maroquinerie Ganterie
Loi 78-654 du 22.06.1978 - Siret 77564972600160 - Code NAF 9412Z - TVA FR 88775649726