



EU-TYPE EXAMINATION CERTIFICATE



The following model of Personal Protective Equipment has been subjected to an EU-type examination in accordance with the module B of the PPE regulation (2016/425) and has been shown to satisfy to essential health and safety requirements.

Certificate N° 0075/1562/161/11/18/2762

Issued by CTC, Notified Body N°0075, to the following model of personal protective equipment :

Manufacturer : **CORTINA N.V.**
MEERSBLOEM-MELDEN 42, 9700 OUDENAARDE,
BELGIUM

Description

PPE Type : *an occupational footwear*

Product reference : **REMY**

Article code : **REMY(WHITE),REMY(NAVY)**

Construction and material of outsole : **Cement, Phylon/Rubber sole**

Pictures :



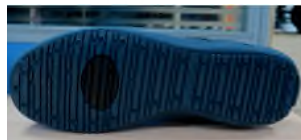
REMY (WHITE)



REMY (NAVY)



REMY (WHITE)



REMY (NAVY)

EU 42 UK 8.0 US9.0 CM28.0 OXYPAS REMY (WHITE) European standard EN ISO 20347:2012 CE OB A E SRC 11/2018 O/57635 CORTINA N.V. MEERSBLOEM-MELDEN 42, 9700 OUDENAARDE, BELGIUM	EU 42 UK 8.0 US9.0 CM28.0 OXYPAS REMY (NAVY) European standard EN ISO 20347:2012 CE OB A E SRC 11/2018 O/57635 CORTINA N.V. MEERSBLOEM-MELDEN 42, 9700 OUDENAARDE, BELGIUM
EN61340-4-3:2001 Class 3-Dissipative US Standard: ASTM F2892-11 SD Made in China Hecho en China Fabrique en Chine	EN61340-4-3:2001 Class 3-Dissipative US Standard: ASTM F2892-11 SD Made in China Hecho en China Fabrique en Chine

Reference standard : **EN ISO 20347 : 2012**

Classification : **I**

Category : **OB A E SRC**

Size range : **39-46**

Slip resistance : **SRC**

Toecap nature : **N/A**

Insert nature : **N/A**

At the date of certificate the product is in compliance with Annex XVII of REACH regulation (n° 1907/2006 and revisions)

Full description of the PPE, reference rules verified in the context of the EU-type examination and information given on the product are detailed in the manufacturer's technical file index 01 dated from NOVEMBER 2018

NOTA : Any modification to new items of the personal protective equipment object of this EU type approval certificate or any modification of the information contained in the manufacturer technical file which served for the deliverance of the EU type approval certificate (change of address, change of company status) should be brought to the attention of the notified body in accordance with Annex V §7.2 of Regulation 2016/425.

Issued in Lyon by

Lionel GAUDILLERE

PPE Certification Manager

Date of first issue : 28 November 2018

End of validity date : 28 November 2023



In application of the Regulation 2016/425 of the European parliament and the Council of 9th March 2016 related to Personal Protective Equipment and repealing the Directive 89/686/EEC.

www.ctcgroupe.com

cemarking@ctcgroupe.com

CTC - 4, rue Hermann Frenkel - 69367 Lyon cedex 07 - France
Tél. : +33 (0)4 72 76 10 10 - Fax : +33 (0)4 72 76 10 00 - ctclyon@ctcgroupe.com

Comité Professionnel de Développement Économique (CPDE) Cuir Chaussure Maroquinerie Ganterie
Loi 78-654 du 22.06.1978 - Siret 77564972600160 - Code NAF 9412Z - TVA FR 88775649726

Original CTC